



## Noise Management Plan

**Site Address:**

Silver Birches, Highland Avenue, Wokingham, Berkshire, RG41 4SP

**Normal operating hours:**

Monday to Friday – 8am to 5pm

Saturday – 8am to 4pm

Sunday & Bank Holidays - Closed

This noise management plan has been prepared to outline the steps being taken by the A1 Group to reduce noise from site operations and to comply with the requirements of the site permit 83313 (EPR FP 3390EU).

This plan will be reviewed annually in consultation with the Environment Agency. The A1 Group is committed to working closely with the Environment Agency to ensure that our operations have limited impact on the general public and local residents.

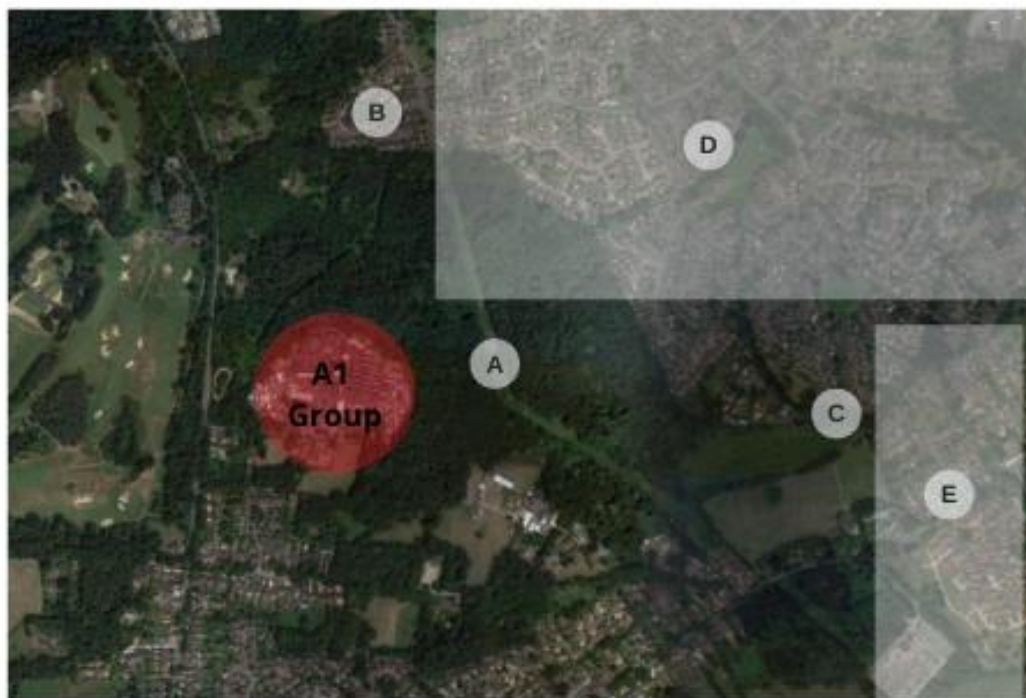
The addition of any permanent or large-scale temporary noise sources to the site will be discussed with the Environment Agency and the noise source and its mitigation and prevention measures will be included in this Noise Management Plan prior to the commencement of the activity giving rise to the noise source.

A1 Wokingham Car Spares & Scrap Metal Recycling understand and accept our responsibilities for controlling noise impact, and regularly review the effectiveness of our NMP to ensure noise emissions are kept as low as possible. We will ensure that both our employees, contractors or subcontractors, will make sure that any noise control equipment is designed, operated and maintained appropriately so it controls noise effectively at all times.

## Noise Receptors

Table A.1 receptor information

Receptor Reference	Receptor
A	Foxhill Woods – Point of noise measurement
B	Tiffany Close – Point of noise measurement
C	Limmerhill Way – Point of noise measurement
D	Upper Woosehill
E	Limmerhill





Noise Sources and mitigation on site

Table A.2 General Yard

Ref No.	Location Ref.	Noise Source	Hours of Operation	Noise Type	Noise Duration	Value – Without Mitigation	Mitigation	Value – With Mitigation
1	A	Main yard gate	05:00 - 08:00 17:00 - 19:00	Squeak (if not oiled)	30 seconds, twice daily	3	<ul style="list-style-type: none"> <li>Keep hinges greased</li> <li>Always lift stay when opening and closing the gates</li> </ul>	1
2	B	Weighbridge	08:00 - 17:00	Clunk	Intermittent throughout the day	3	<ul style="list-style-type: none"> <li>5MPH per hour speed limit to reduce bridge movement</li> <li>Ensure regular maintenance carried out to ensure smooth operation (no loose bolts etc)</li> </ul>	2
3	C	Movement of vehicles - Customer Vehicles	08:00 - 17:00	Engine noise	Intermittent throughout the day	2	<ul style="list-style-type: none"> <li>10 MPH speed limit on Highland Avenue</li> <li>5 MPH speed limit in scrap yard</li> <li>All road ways within the yard maintained to reduce vehicle noise (no pot holes etc)</li> <li>Notices requesting consideration of the neighbours and reduction in noise are displayed on the access road</li> </ul>	1
4	D	Movement of vehicles - Customer Lorries	08:00 - 17:00 08:00 - 16:00	Engine noise	Intermittent throughout the day	4	<ul style="list-style-type: none"> <li>10 MPH speed limit on Highland Avenue</li> <li>5 MPH speed limit in scrap yard</li> </ul>	3



							<ul style="list-style-type: none"> <li>All road ways within the yard maintained to reduce vehicle noise (no pot holes etc)</li> <li>Yard layout has been designed to keep reversing to a minimum to avoid the need for reversing beepers</li> <li>Notices requesting consideration of the neighbours and reduction in noise are displayed on the access road</li> </ul>	
5	E	Movement of vehicles - A1 Lorries	06:00 - 19:00 07:00 - 17:00	Engine noise	Intermittent throughout the day	4	<ul style="list-style-type: none"> <li>10 MPH speed limit on Highland Avenue</li> <li>5 MPH speed limit in scrap yard</li> <li>All road ways within the yard maintained to reduce vehicle noise (no pot holes etc)</li> <li>All vehicles are fitted with white noise beepers</li> </ul>	3
6	F	Forklifts	08:00 - 16:30 (Mon - Fri) 08:00 - 15.30 (Saturday)	Engine noise	Intermittent throughout the day	5	<ul style="list-style-type: none"> <li>Our forklifts are fitted with white noise beepers and standard beepers.</li> <li>All forklift drivers are trained to required H&amp;S standard to ensure smooth handling of vehicles/materials, thus reducing noise</li> </ul>	3
7	G	Site communication	08:00 - 17:00	Chatter	Intermittent throughout the day	2	<ul style="list-style-type: none"> <li>Communication within yard is only carried out via face to face communication and walkie-talkies</li> </ul>	1
8	H	Entertainment radio	08:00 - 17:00	Chatter / Music	Throughout the day	2	<ul style="list-style-type: none"> <li>Only used within enclosed sheds and kept to a low level</li> </ul>	1



See appendix 1 for noise impact



Table A.3 Ferrous Scrap Metal Handing

Ref No.	Location Ref.	Noise Source	Hours of Operation	Noise Type	Noise Duration	Value – Without Mitigation	Mitigation	Value – With Mitigation
9	I	Unloading Loose Scrap Lorries	08:00 - 16:30 (Mon-Fri) 08:00 - 15.30 (Saturday)	Crashing	5-10 minutes intermittent throughout the day	6	<ul style="list-style-type: none"> <li>All vehicles loaded with ferrous metal are unloaded in a confined area, close to the baler and behind the site noise barrier which minimalises double handling to keep noise impact to a minimum</li> <li>The crane operators always ensure to 'place' metal down rather than dropping it.</li> <li>The crane operators ensure the loads they pick up are not too large, therefore avoiding any debris falling from the crane onto the floor.</li> <li>Where a 'tipping' vehicle is unloading, the crane will always grab as much metal from the lorry body as possible. The vehicle will only tip any contents that cannot be picked up by the crane, therefore minimising the noise of the unloading process.</li> </ul>	3
10	J	De-pollution	08:00 - 16:30 (Mon – Fri) 08:00 - 15.30 (Saturday)	Drilling/hand tools	Intermittent throughout the day	6	<ul style="list-style-type: none"> <li>Depollution rigs are constructed within a shed</li> <li>Run off silent type generators and compressors</li> </ul>	3



							<ul style="list-style-type: none"> <li>• Installed and operated within the building or bunded area</li> <li>• Once the wheels have been removed, they are placed into a skip rather than 'thrown'</li> </ul>	
11	K	Loading / Unloading Alloy Wheels	Twice a week	Crashing	10 minutes	8	<ul style="list-style-type: none"> <li>• Operation always carried out behind the sound barrier. The duration for unloading is under one minute and recorded within the site diary</li> <li>• Whilst loading, every effort is made to mechanically place the wheels within the bed of the lorry - as opposed to dropping. Loading a lorry takes approximately 15 minutes</li> <li>• Hand loading of the alloy wheels has been considered however this is not a possibility as the load is in excess of 25 tonnes. This would also require 'dropping' of the alloys into a bulker vehicle for a very long period of time. Height issues for accessing the lorry body would also be an issue.</li> </ul>	7
12	L	Concrete Scraping	Periodically throughout the day	Scraping	Intermittent throughout the day	6	<ul style="list-style-type: none"> <li>• Formerly completed with large rsj on the end of crane, now completed with baled chain link fencing to reduce noise impact</li> </ul>	3
13	M	Cranes (3 in operation)	08:00 - 16:30 (Mon - Fri) 08:00 - 15.30 (Saturday)	Picking up and putting down metal objects	Steady throughout the day	7	<ul style="list-style-type: none"> <li>• Crane operations take places in a confined are of the site behind the noise barrier</li> </ul>	4



				Engine Noise			<ul style="list-style-type: none"> <li>Crane operators always ensure to place materials down rather than 'throw' them</li> <li>Regular maintenance is carried out to ensure smooth operation</li> <li>All engine covers/hoods etc kept in place</li> <li>All stockpiles of scrap/ELV's kept below the top of the noise barrier</li> <li>Care Taken when stacking and piling ELV's to ensure they do not fall off piles during or after stacking</li> <li>Care taken when stacking and piling loose scrap to ensure it does not fall during or after stacking</li> </ul>	
14	N	Baler	08:00 - 16:30 (Mon - Fri) 08:00 - 15.30 (Saturday)	Wining and droning	Wining – steadily throughout the day Droning – short bursts intermittently	8	<ul style="list-style-type: none"> <li>Original sound barrier in place</li> <li>Baler modifications completed in 2021 have seen a custom-made steel enclosure built and installed around the baler which has led to a significant reduction in noise.</li> </ul>	3
14.1	NA	Loading bulk vehicles with loose scrap and baled ELV's	08:00 - 16:30 (Mon - Fri)	Putting down metal objects  Engine Noise	5-10 minutes intermittent throughout the day	6	<ul style="list-style-type: none"> <li>All bulk vehicles are loaded in a confined area, close to the baler and behind the site noise barrier which minimilises double handling to keep noise impact to a minimum</li> <li>The crane operators always ensure to 'place' metal down rather than dropping it</li> </ul>	3





							<ul style="list-style-type: none"> <li>The crane operators ensure the loads they pick up are not too large, therefore avoiding any debris falling from the crane onto the floor.</li> </ul>	
14.2	NB	Loading baler	08:00 - 16:30 (Mon - Fri) 08:00 - 15.30 (Saturday)	Putting down metal objects  Engine Noise	Steady throughout the day	6	<ul style="list-style-type: none"> <li>The baler is loaded in a confined area, behind the site noise barrier which minimalises double handling to keep noise impact to a minimum</li> <li>The crane operators always ensure to 'place' metal down rather than dropping it</li> <li>The crane operators ensure the loads they pick up are not too large, therefore avoiding any debris falling from the crane onto the floor.</li> </ul>	3

**N.B** There is a 30ft noise barrier in place along the north boundary of the scrap metal handling area, this is constructed of RSJ's with metal clad sheets. During 2020 an extension was made the barrier along the eastern side of the scrap metal handling area, this is 100mm thick and is made of 75 mm sound proof panels with rockwool insulation (designed for sound proofing on motorways).

**Table A.4 Lorry Park**

Ref No.	Location Ref.	Noise Source	Hours of Operation	Noise Type	Noise Duration	Value – Without Mitigation	Mitigation	Value – With Mitigation
15	O	Gate to lorry park	06:00 - 18:00	Squeak (if not oiled)	30 seconds twice daily	2	<ul style="list-style-type: none"> <li>Keep hinges greased</li> <li>Always lift stay when opening and closing the gates</li> </ul>	1



16	P	Unloading Car Transporters	08:00 - 16:30 (Mon - Fri) 08:00 - 15.30 (Saturday)	Forklift noise	10 minutes Intermittent throughout the day	3	<p>Where forklift is required to remove vehicle (eg no wheels on vehicle / burnt out vehicle)</p> <ul style="list-style-type: none"> <li>All unloading undertaken behind noise barrier</li> <li>Our forklifts are fitted with white noise bleepers and standard bleepers.</li> </ul> <p>Where forklift not required</p> <ul style="list-style-type: none"> <li>Vehicles are rolled off using their wheels, to avoid unnecessary engine noise.</li> </ul>	2
----	---	----------------------------	---	----------------	--	---	--	---

**Table A.5 Car Spares Department**

Ref No.	Location Ref.	Noise Source	Hours of Operation	Noise Type	Noise Duration	Value – Without Mitigation	Mitigation	Value – With Mitigation
17	Q	Sliding gate into Car Spares department	Periodically throughout the day	Sliding noise	>30 seconds Intermittent throughout the day	3	<ul style="list-style-type: none"> <li>Keep rails greased</li> <li>Open and close gently without slamming</li> </ul>	1
18	R	De-pollution	08:00 - 16:30 (Mon – Fri) 08:00 - 15.30 (Saturday)	Hand tools	Intermittent throughout the day	6	<ul style="list-style-type: none"> <li>Depollution rigs are constructed within a shed</li> <li>Generator is located behind the noise barrier</li> </ul>	3



19	S	Parts processing	08:00 - 16:30 (Mon – Fri) 08:00 - 15.30 (Saturday)	Hand tools	Intermittent throughout the day	3	<ul style="list-style-type: none"><li>Parts processing area is constructed within a shed</li></ul>	1
----	---	------------------	---	------------	---------------------------------------	---	--	---



Table A.6 Non-Ferrous Department

Ref No.	Location Ref.	Noise Source	Hours of Operation	Noise Type	Noise Duration	Value – Without Mitigation	Mitigation	Value – With Mitigation
21	U	Forklifts	08:00 - 16:30 (Mon - Fri) 08:00 - 15.30 (Saturday)	Engine noise	Intermittent throughout the day	5	<ul style="list-style-type: none"> <li>Our forklifts are fitted with white noise beepers and standard beepers.</li> <li>All forklift drivers are trained to required H&amp;S standard to ensure smooth handling of vehicles/materials, thus reducing noise</li> </ul>	3
22	V	Crane	08:00 - 16:30 (Mon - Fri) 08:00 - 15.30 (Saturday)	Moving metal from floor into metal bin and from bin into lorry	Once or twice weekly for approx. 30 minutes	7	<ul style="list-style-type: none"> <li>The crane only enters the non-ferrous department once or twice a week when the floor area becomes full and the metal needs to be moved into the metal bin and when the metal bins are full and need loading into a lorry to be collected.</li> <li>Metal is placed into the bin by the crane rather than being 'dropped' in</li> <li>Regular maintenance is carried out to ensure smooth operation</li> <li>Loose non-ferrous is stored in bulk in metal bins and collected weekly once there is enough to fill a lorry. Collection is weekly to avoid multiple vehicle movement on site and excess noise from loading the loose scrap metal.</li> </ul>	4



							<ul style="list-style-type: none"> <li>Loading of the lorries is done by placing the metal in the lorry rather than 'dropping' this ensures minimum noise pollution.</li> </ul>	
22	W	Unloading loose scrap	08:00 - 16:30 (Mon - Fri) 08:00 - 15.30 (Saturday)	Moving metal from vehicle to scales	Intermittent throughout the day	5	<ul style="list-style-type: none"> <li>Non-ferrous metals are placed onto the scales rather than by use of cranes - non-ferrous metals are generally smaller quantities and can normally be moved by hand.</li> </ul>	3



### **Noisy activities**

Any pre-planned noisy activities are recorded in our site diary. Noise emissions are always kept as low as possible whilst carrying out any noisy activity.

### **Unexpected noises**

Any loud noises that are not part of our normal day to day business activities are recorded in the site diary.

### **Out of hours operations**

On rare occasions, there may be a need to work outside of our normal operating hours, such as when there is a breakdown of machinery. We will always endeavour to inform the EA in advance of any work that happens outside of normal hours. We will also record a log in the site diary. All effort will be made to minimise noise generating activities during these periods, this will involve only carrying out works that are a priority and necessary such as loading and unloading the baler. No concrete scraping will take place. If the work we need to carry out is deemed as a serious noise pollution, every effort will be made to minimise the noise or the work will be postponed until the following day in working hours.

### **Staff Training:**

All site staff receive noise training as a part of their induction programme.

Our monthly Group Safety Committee meetings have a slot for noise issues and the importance of controlling noise is discussed with employees at 'Tool Box Talks'.

A record of all staff training that has taken place and any updates are added onto the Training Matrix. All staff meetings have the minutes with regards to training raised and actions to follow up are typed up and kept on file.

All staff are made aware of the noise management plan and are updated as it changes. A simplified version of the plan is displayed in the staff room.

### **Noise checks and inspections / Operator noise monitoring**

Weekly health and safety checks are carried out in each department of the yard, part of the weekly checks includes checking noise sources and ensuring noises are ALARP. These weekly checks also include looking at structural areas within the site, including the noise barrier to ensure there is no damages or issues with its structure. The designated health and safety operative for each department will also monitor the work being carried out in each area to ensure all noise mitigation measures are being adhered to. If not, they will be marked as a failure and the member of staff carrying out the work will be spoken to by management to remind them of the practices in place before they are allowed to continue to work. This will then be closely monitored by management to ensure they have understood. Noise mitigation measure are also included in the staff refresher training.

Any noises that are louder than they should be, will 'fail' their check (i.e. a gate is squeaking and needs oiling) and will then be rectified before the next weekly inspection. The staff completing the checks are also able to make note of any unexpected or new noises that can be raised and rectified if



needed. As a part of our general maintenance within the yard, noise is monitored as a part of all general plant and machinery maintenance checks.

Details and records of all of the above checks are held on site and on the ipad devices that are used to carry out the checks. If staff are not adhering to the mitigation measures, records of any meetings/disciplinaries will also be stored in their staff files and on our HR system.

Offsite monitoring will be carried out if there are any major changes made to our plant and/or machinery, or unless recommended by the environment agency.

A member of site staff completes a check of the woods each day. Part of this check is to monitor and report any noise out of the ordinary.

If a new noise source is added to site then specific monitoring will be carried out in the Woosehill area. Specific problems arising with noise mitigation will be reported to the Environment Agency.

We continue to monitor and record any findings that arise from noise monitoring.

### **General maintenance**

Our in-house plant and machinery fitter carries out regular checks on all plant, vehicles and machinery to ensure all are in good working order, this includes silencers and applied noise control. All yard operatives that use plant and machinery including forklifts, cranes complete daily inspection checklists to ensure that the equipment is in full working order. If any issues are found (whether noise related or other) the equipment is placed in quarantine and not used until any issues are resolved.

We also have ongoing maintenance contracts with the manufacturers of our largest equipment ie cranes, weigh bridge/scales, baler. These are automatically serviced annually (or after certain hours of usage).

All plant and equipment is also subject to annual checks in order to renew our insurance. This is an independent review organised by the insurance company themselves.

Details and records of all of the above maintenance are held on site.

### **Neighbour Engagement**

Any noise complaints from local neighbours are reported directly to the EA via their contact number. These are recorded and sent to us on a weekly or monthly basis depending on the quantity. Any complaints received are then reviewed internally and compared to our site diary where any unusual noises are recorded. We have recently carried out a site visit for the local community to visit the yard and understand more about what goes on here. This was open to all public but with the focus to show those that 'complain' what goes on, and to improve relations with the local community. This was a success and we hope to carry out more in the future.

### **Other factors**

Crane uses are predominately defined to their standard areas on site (Locations V & M) however on occasions a crane may be used in different areas



## Appendix

### Appendix 1 - Noise impact values

Value	Impact
9-10	High
7-8	Medium/high
5-6	Medium
3-4	Low/medium
1-2	Low



Appendix 2 - Site Map with noise locations

